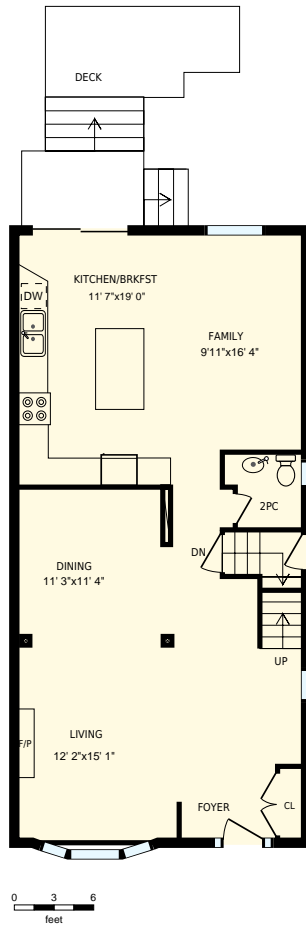


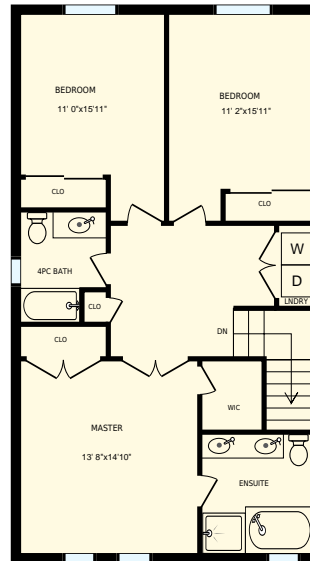


14 North Dr, Toronto, ON

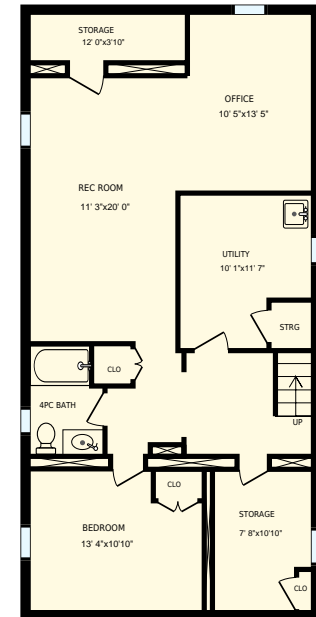
Total Exterior Area Above Grade 2322 sq. ft.



Main Floor
Exterior Area 1207 sq. ft.



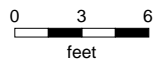
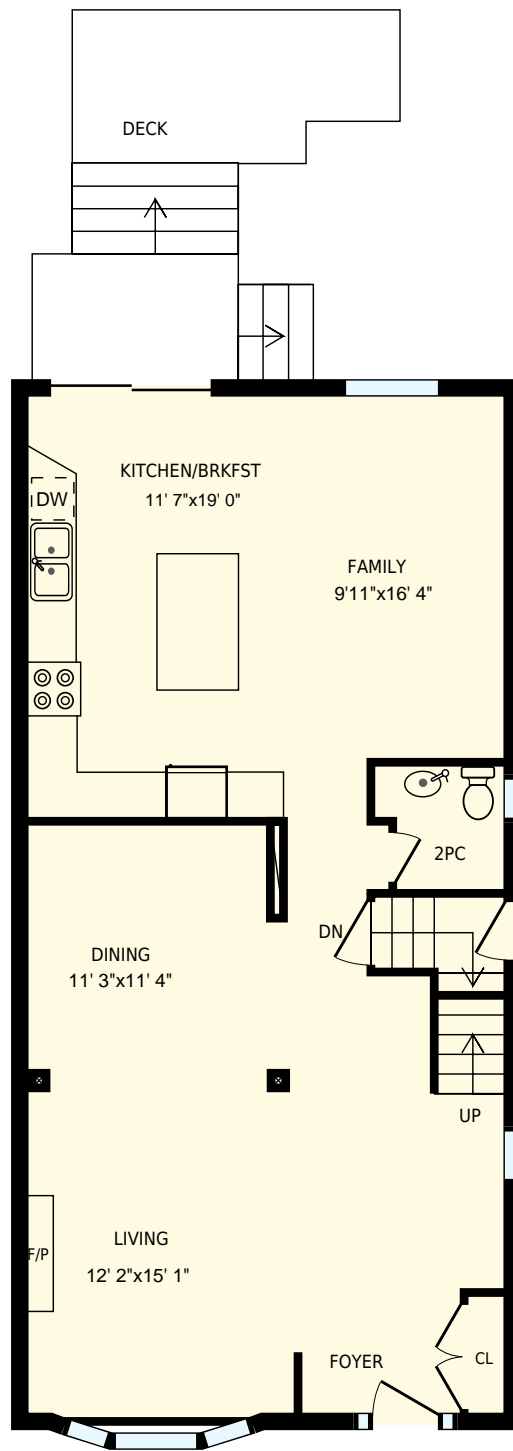
2nd floor
Exterior Area 1116 sq. ft.



Basement
Exterior Area 1185 sq. ft.

Colored regions are included in total floor area. All room dimensions and floor areas must be considered approximate and are subject to independent verification. For method of measurement please see <https://youriguide.com/measure/>.

PREPARED FOR: Geoffrey Grace
Salesperson
Re/Max Hallmark Realty Brokerage Ltd.




14 North Dr, Toronto, ON

PREPARED FOR:
Geoffrey Grace
Salesperson
Re/Max Hallmark Realty Brokerage Ltd.

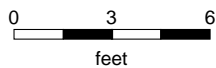
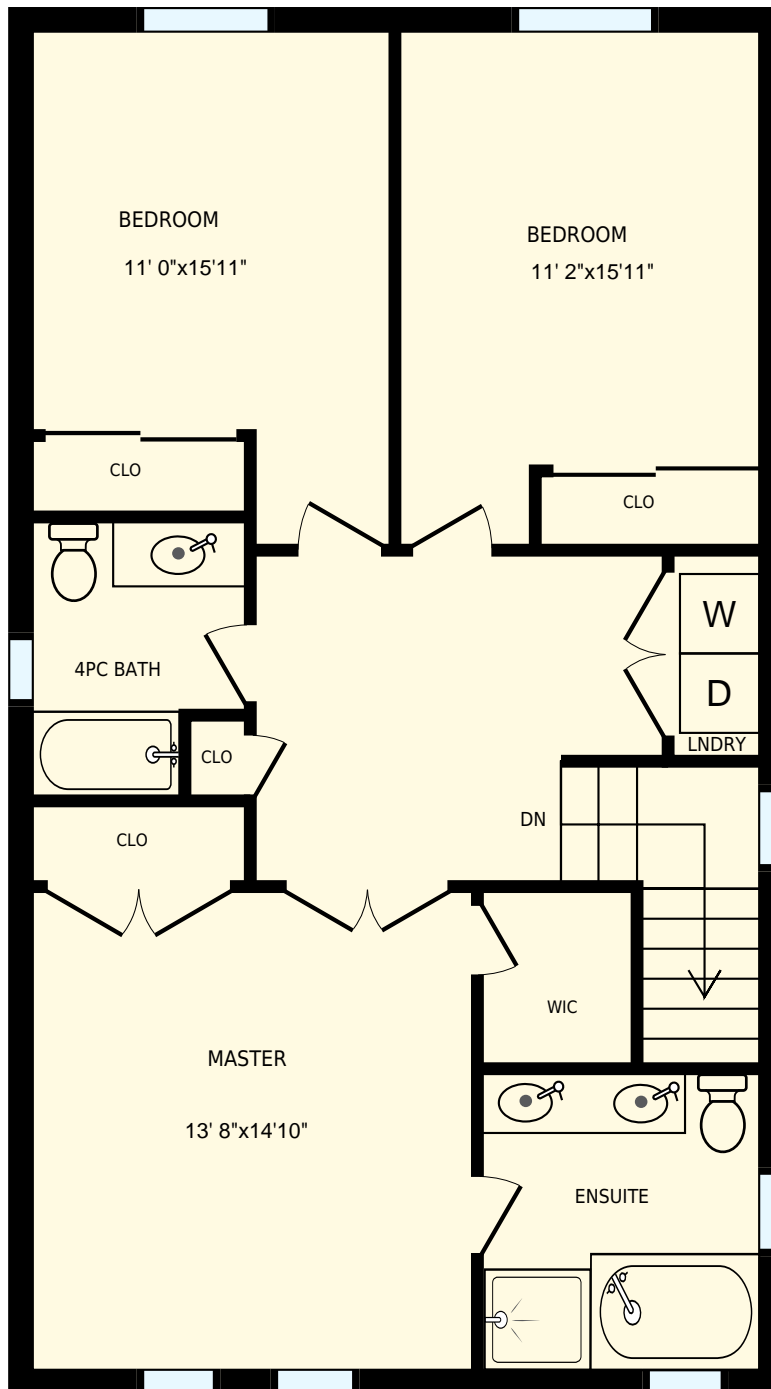
Main Floor

Interior Area 1023 sq. ft.
Exterior Area 1207 sq. ft.

 Included Area

PREPARED:
Oct, 2017

Colored regions are included in total floor area. All room dimensions and floor areas must be considered approximate and are subject to independent verification. For method of measurement please see <https://youriguide.com/measure/>.



14 North Dr, Toronto, ON

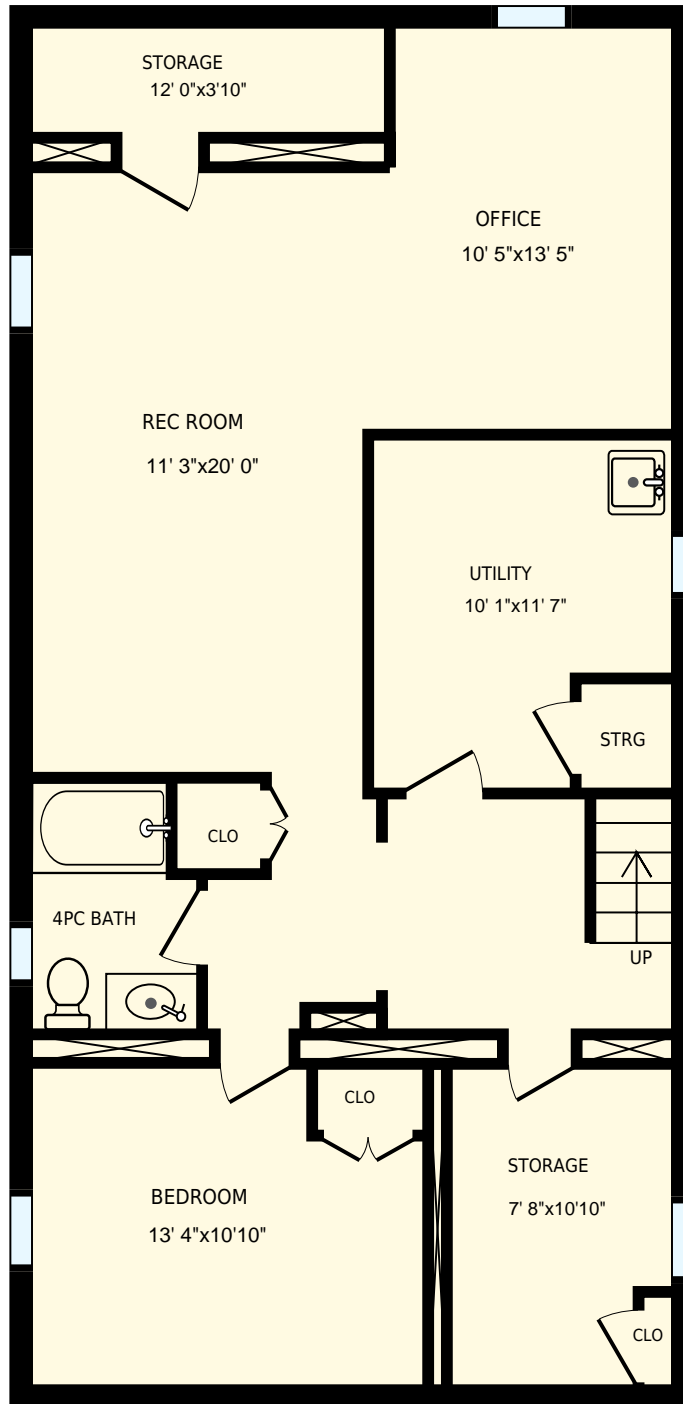
PREPARED FOR:
Geoffrey Grace
Salesperson
Re/Max Hallmark Realty Brokerage Ltd.

2nd floor

Interior Area 943 sq. ft.
Exterior Area 1116 sq. ft. Included Area

PREPARED:
Oct, 2017

Colored regions are included in total floor area. All room dimensions and floor areas must be considered approximate and are subject to independent verification. For method of measurement please see <https://youriguide.com/measure/>.



14 North Dr, Toronto, ON

PREPARED FOR:
Geoffrey Grace
Salesperson
Re/Max Hallmark Realty Brokerage Ltd.

Basement

Interior Area 1003 sq. ft.
Exterior Area 1185 sq. ft. Included Area

PREPARED:
Oct, 2017

Colored regions are included in total floor area. All room dimensions and floor areas must be considered approximate and are subject to independent verification. For method of measurement please see <https://youriguide.com/measure/>.