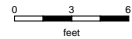
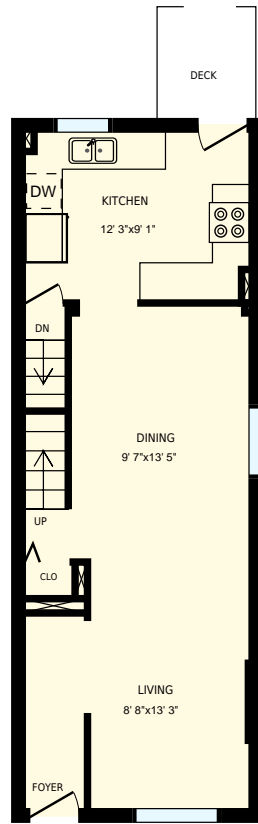


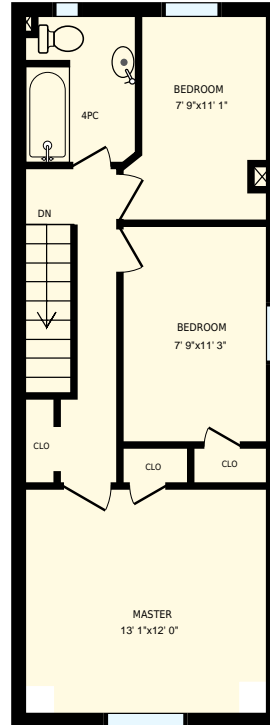


713 Woodbine Ave, Toronto, ON

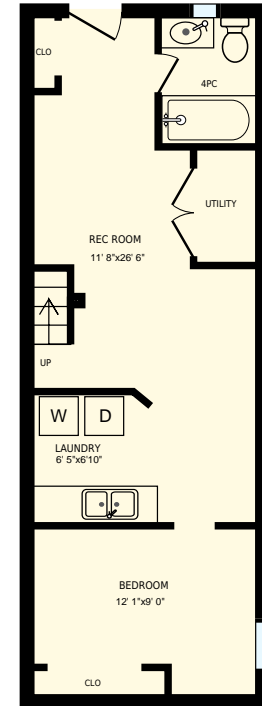
Total Exterior Area Above Grade 1127 sq. ft.



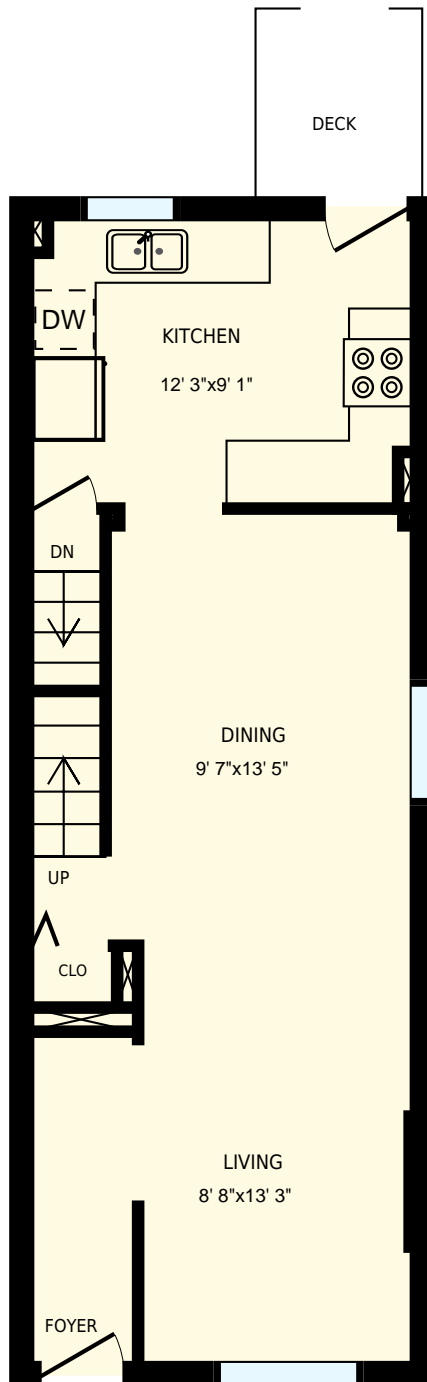
Main Floor
Exterior Area 540 sq. ft.



2nd Floor
Exterior Area 587 sq. ft.



Basement
Exterior Area 541 sq. ft.



713 Woodbine Ave, Toronto, ON

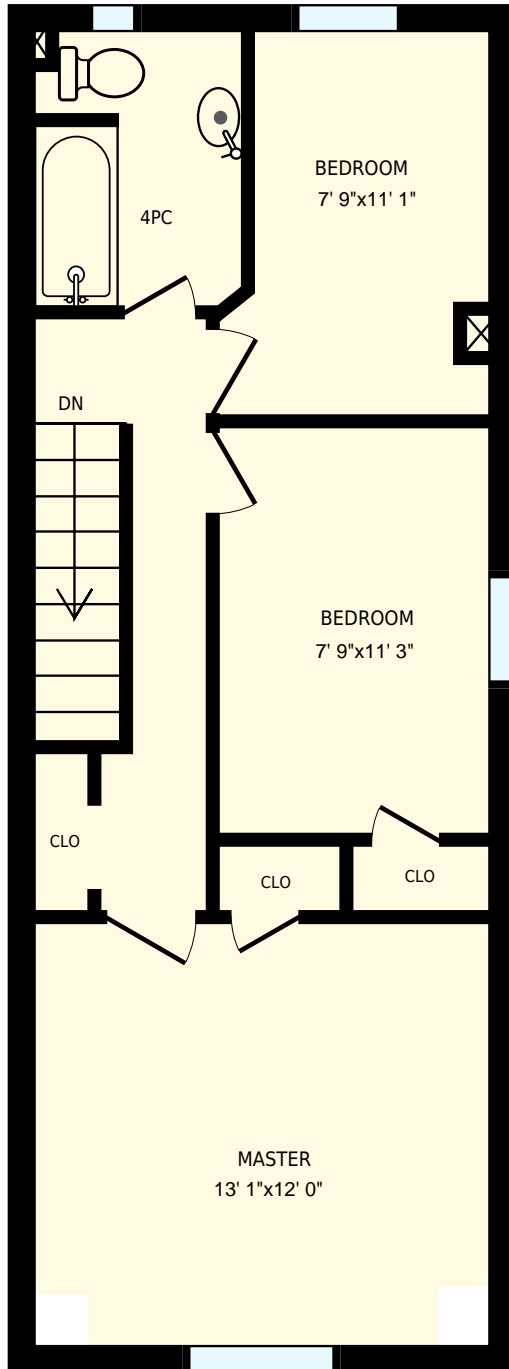
PREPARED FOR:
Geoffrey Grace
Salesperson
Re/Max Hallmark Realty Brokerage Ltd.

Main Floor

Interior Area 445 sq. ft.
Exterior Area 540 sq. ft. Included Area

PREPARED ON:
Sep, 2017

All room dimensions and floor areas must be considered approximate and are subject to independent verification. For method of measurement please see <https://youriguide.com/measure/>.



713 Woodbine Ave, Toronto, ON

PREPARED FOR:
Geoffrey Grace
Salesperson
Re/Max Hallmark Realty Brokerage Ltd.

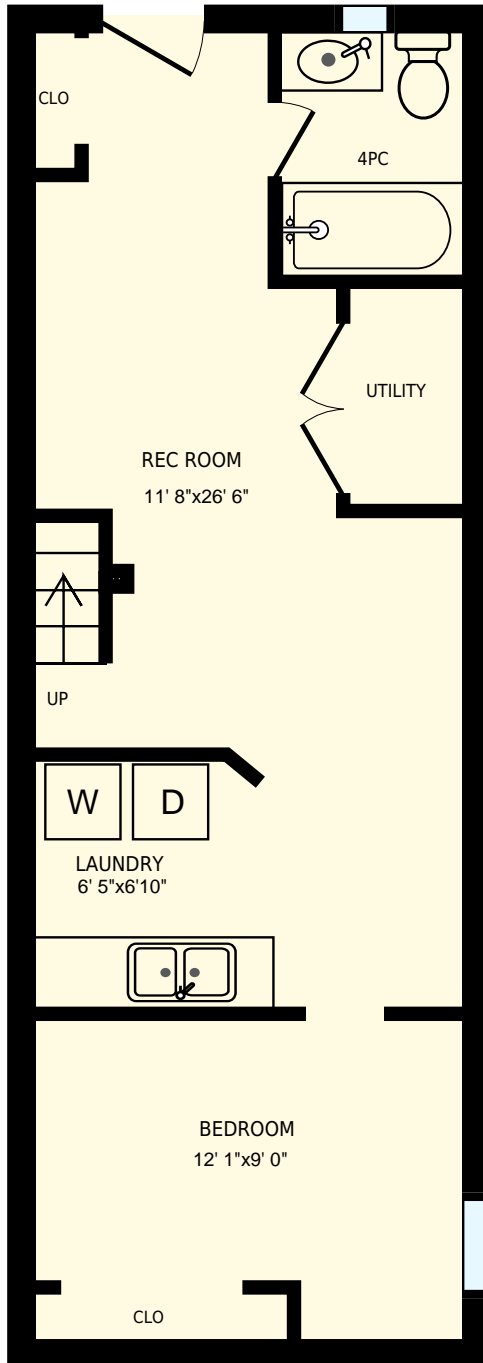
2nd Floor

Interior Area 488 sq. ft.
Exterior Area 587 sq. ft.

 Included Area

PREPARED ON:
Sep, 2017

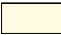
All room dimensions and floor areas must be considered approximate and are subject to independent verification.
For method of measurement please see <https://youriguide.com/measure/>.



713 Woodbine Ave, Toronto, ON

PREPARED FOR:
Geoffrey Grace
Salesperson
Re/Max Hallmark Realty Brokerage Ltd.

Basement

Interior Area 446 sq. ft.
Exterior Area 541 sq. ft.  Included Area

PREPARED ON:
Sep, 2017

All room dimensions and floor areas must be considered approximate and are subject to independent verification. For method of measurement please see <https://youriguide.com/measure/>.